



LITESPHERE 2.0

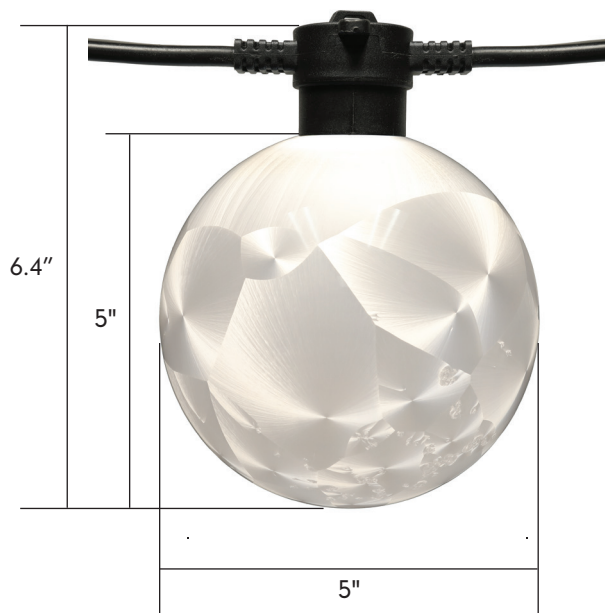
AND



Project: \_\_\_\_\_ TYPE: \_\_\_\_\_

- The next evolution of ADAPT delivers a robust specification-grade strand with factory molded standard spacing for consistent quality from start to finish
- Litesphere ADAPT 2.0 design provides optional suspended mounting or a twist-off cap for surface applications
- Available DarkSky option with added light shade
- 12V DC Low voltage system for long runs
- Socket and cord color available in black or white
- PET ADAPT Globe for shatter-proof performance
- IP67
- cULus
- 5 Year warranty

Dimensions





Strand Order Guide - Standard Globe

**Note:** For suspension application, a catenary cable is required for proper installation. Please contact Tivoli for recommendations on unique mounting applications.

Product	Wire	Spacing	LED Type	LED Color	Globe	Voltage
<b>LSA2</b> Litesphere ADAPT 2.0	<b>B</b> = Black <b>W</b> = White*	<b>12</b> = 12" OC <b>18</b> = 18" OC <b>24</b> = 24" OC <b>36</b> = 36" OC <b>48</b> = 48" OC	<b>V</b> = Very High Output	<b>19</b> = 1900K <b>27</b> = 2700K <b>30</b> = 3000K <b>35</b> = 3500K <b>40</b> = 4000K <b>50</b> = 5000K <b>AM</b> = Amber <b>RB</b> = Royal Blue <b>RD</b> = Red <b>GN</b> = Green <b>YL</b> = Yellow <b>TS</b> = Turtle Safe	<b>GINPET</b> = Gina <b>ANGPET</b> = Angela <b>KATPET</b> = Katie <b>LUCPET</b> = Lucia <b>JENPET</b> = Jennifer <b>JOAPET</b> = Joanne <b>MNPET</b> = Manqi <b>BREPET</b> = Brenda	<b>12</b> = 12V DC

\*For wire color white contact Factory for MOQ and lead time

Note: Optional Light Shade are needed to comply with DarkSky requirements. Consult factory for lead time and available style and sizes - see page 7

Delivered Lumen

Output - <b>GINPET</b> (3500K)					
Spacing	12"	18"	24"	36"	48"
Lumens/ft	76.5	51	38.25	25.5	19.13

Output - <b>ANGPET</b> (3500K)					
Spacing	12"	18"	24"	36"	48"
Lumens/ft	76.5	51	38.25	25.5	19.13

Output - <b>JOAPET</b> (3500K)					
Spacing	12"	18"	24"	36"	48"
Lumens/ft	72.6	48.4	36.3	24.2	18.15

Output - <b>KATPET</b> (3500K)					
Spacing	12"	18"	24"	36"	48"
Lumens/ft	CF	CF	CF	CF	CF

Output - <b>MNPET</b> (3500K)					
Spacing	12"	18"	24"	36"	48"
Lumens/ft	CF	CF	CF	CF	CF

Output - <b>LUCPET</b> (3500K)					
Spacing	12"	18"	24"	36"	48"
Lumens/ft	82.8	55.2	41.4	27.6	20.7

Output - <b>BREPET</b> (3500K)					
Spacing	12"	18"	24"	36"	48"
Lumens/ft	62.5	41.67	31.25	20.83	15.63

Output - <b>JENPET</b> (3500K)					
Spacing	12"	18"	24"	36"	48"
Lumens/f	71.8	47.87	35.9	23.93	17.95

## Specifications

Electrical					
Spacing	12"	18"	24"	36"	48"
Maximum Electrical Run	55'	70'	80'	90'	100'
Watts/ft	0.84	0.56	0.42	0.28	0.21
Input Voltage	12V DC				

Physical	
Dimensions (G120)	7.1" H x 5" W
Dimensions (ST19)	6.7" H x 2.375" W
Socket Housing	PVC
American Wire Gauge	14 AWG
Globe	PET (Shatter proof)
Mounting	Surface Mount, Suspended
Operating Temperature	-40°C to 65°C (-40°F to 149°F)

Certification and Testing	
Certification	cULus
Environment	Wet Location
Lumen Maintenance (L70)	70,000
IP Rating	IP67
Warranty	5 Years

Control	
Control System	0-10V, ELV, MLV, DMX 512 (Dim to 1% with an Infinity power supply and a 0-10V Lutron Diva dimmer)

Weights (G120)	12"	18"	24"	36"	48"
lb/ft w/strand	0.44	0.35	0.29	0.17	0.15
lb/ft w/cable	0.46	0.37	0.31	0.19	0.17

Weights (ST19)	12"	18"	24"	36"	48"
lb/ft w/strand	0.34	0.28	0.24	0.14	0.13
lb/ft w/cable	0.36	0.30	0.26	0.16	0.15

EPA (Side)	12"	18"	24"	36"	48"
G120	0.11	0.07	0.06	0.04	0.03
ST19	0.05	0.03	0.03	0.02	0.01
Hat 8"	0.07	0.05	0.04	0.02	0.02
Hat 13"	0.12	0.08	0.06	0.04	0.03
Dish 10"	0.05	0.03	0.03	0.02	0.01
Flower 10"	0.06	0.04	0.03	0.02	0.02
Flower 13"	0.08	0.05	0.04	0.03	0.02

**Power Lead Order Guide**

Figure A - All Litesphere ADAPT 2.0 are evenly cut between globes according to specified spacing.  
 Figure B - Power leads are added to the end cut, extending the total length of the power lead.

**LSL2-XEP-X-XX**

X = B (Black), W (White)

XX = 05 (5'), 10 (10'), 15 (15'), 20 (20'), 25 (25')

For custom length consult factory

Figure A

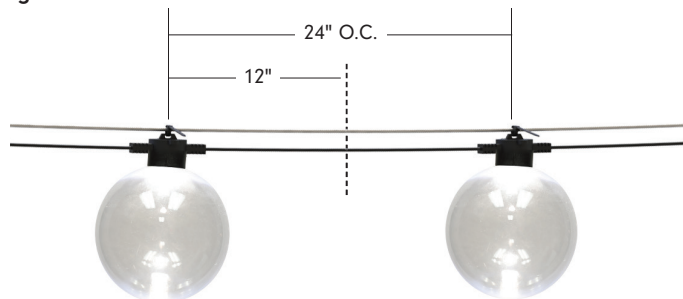
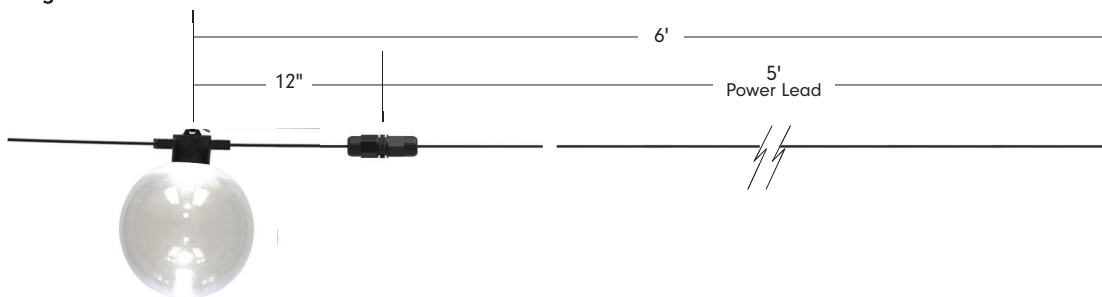


Figure B



**Jumper Order Guide**

Figure A - All Litesphere ADAPT 2.0 are evenly cut between globes according to specified spacing.  
 Figure B - Jumpers are added between the cuts, extending the total length of wire between globes.

**LSL2-JUMPER-X-XX**

X = B (Black), W (White)

XX = 05 (5'), 10 (10')

For custom length consult factory

Figure A

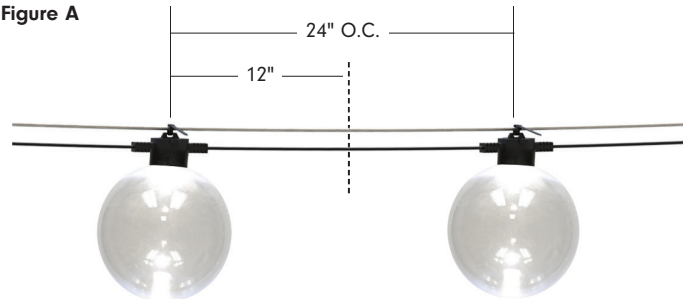
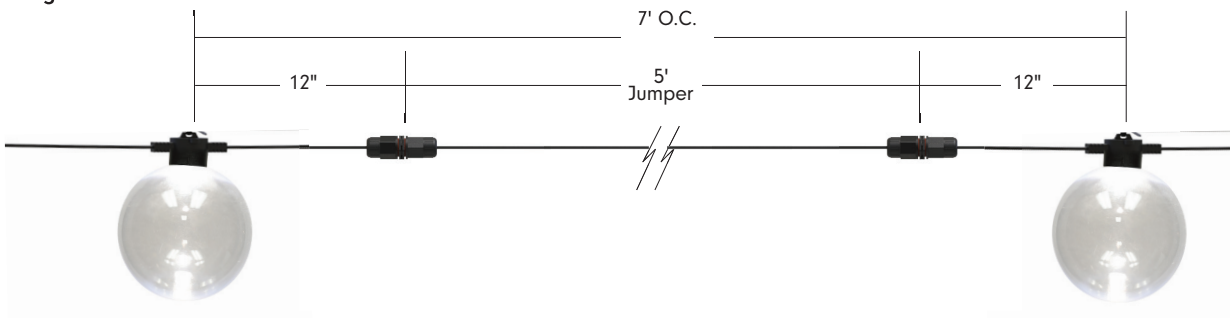


Figure B



## Mounting Options

### SURFACE/FLUSH

For surface mount applications, remove the top suspension-plate by turning counter-clockwise until off. Place socket flush against the desired surface and mount using proper screws according to substrate.



### SUSPENDED

Suspended mounting will use a combination of LS-Cable, LS-Locks with LS-UVZP. Tension the cable wire with our LS-TT (Tension Tool) for desired sag (Please adhere to local city code for suspended application).

**Note:** For suspension application, a catenary cable is required for proper installation. Please contact Tivoli for recommendations on unique mounting applications.



## Mounting Accessories

**Warning:** For suspension application, catenary cable is required to support the product, otherwise the warranty will be void.



**LS-CABLE-X**  
**X = 60 (60'), 110 (110'), 500 (500')**  
 1/8" Galvanized cable includes (2) cable locks for use with loads up to 200lbs  
 Note: 500' no locks included



**LS-LOCK-X**  
**X = 2 (2 pcs), 4 (4 pcs)**  
 Includes (1) release key  
 Cable Lock for 1/8" cable, support loads up to 200 lbs.



**LS-TT**  
 Cable tensioning tool up to 880lbs with 6:1 gear drive with integral torque gauge controls



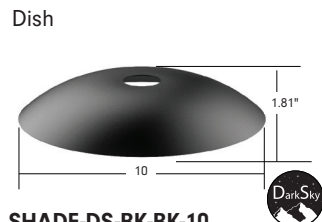
**LS-UVZP-BK-XX**  
**XX = 30 (30 pcs), 50 (50 pcs)**  
 Black UV resistant, heavy duty ties maximum weight up to 100 lbs./per tie

## Light Shade Accessories

**Note:** Light Shade needed for DarkSky compliance



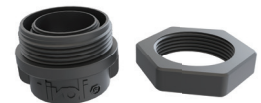
**SHADE-HT-BK-XX-XX**  
**XX = BK (black), CO\* (copper)**  
**XX = 8 (8.3"), 13\*\* (12.6")**  
 Black top, black/copper bottom  
 Weight: 0.46 lb (8), 1.2 lb (13)



**SHADE-DS-BK-BK-10**  
 10.2" Black top, black bottom  
 Weight: 0.76 lb



**SHADE-FL-BK-BK-XX**  
**XX = 10 (9.8"), 13 (13.8")**  
 Black top, black bottom  
 Weight: 0.63 lb (10), 1.48 lb (13)



**SHADE-ADP-LSL2-XX-XX**  
**XX = BK (Black), WH\* (White)**  
**XX = 01 (1pc), 25 (25pcs), 50 (50pcs)**  
 Litesphere 2.0 Shade Adapter kit  
**Note:** One adaptor required for each shade

\*Only available for 13 (Hat)

\*\*Consult factory for lead time and MOQ

**ADAPT Globe /Replacement**

Note: Polyethylene Terephthalate (PET) globe for 100% shatter proof design  
PET globes should not be exposed to industrial alcohol



**LSA2-MNQ-PET**  
Manqi PET Globe  
Diffused Pearl Design



**LSA2-LUC-PET**  
Lucia PET Globe  
Clear Design



**LSA2-JEN-PET**  
Jennifer PET Globe  
Simulated Cracked Design



**LSA2-JOA-PET**  
Joanne PET Globe  
Simulated Fragmented Design



**LSA2-GIN-PET**  
Gina PET Globe  
Clear with Frosted Design



**LSA2-KAT-PET**  
Katie PET Globe  
Clear with Frosted Design  
**LSA2-KAT-F-PET**  
Slightly Frosted with  
Frosted Design

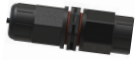


**LSA2-ANG-PET**  
Angela PET Globe  
Clear with Frosted Design



**LSA2-BRE-PET**  
Brenda PET Globe  
Classic S19 Vintage Profile

Replacement Parts



**LSL2-INT-X**  
**X = B** (black), **W\*** (white)  
 Connector to join the strand  
 Sold each



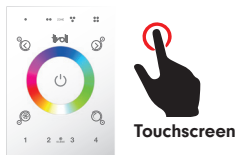
**LSL2-EC-X-(PK20)**  
**X = B** (black), **W\*** (white)  
 Litesphere 2.0 End-Cap  
 Sold each  
 (add **PK20** for pack of 20)  
 Weight: 0.0375 lb/each



**LSL-XX-V-12**  
**XX = 19, 27, 30, 35, 40, 50\***,  
**AM\***, **RD\***, **RB\***, **GN\***, **YL\***, **TS\***  
 12V VHO Wedge Base LED  
 Sold each

\*Contact Factory for MOQ and lead time

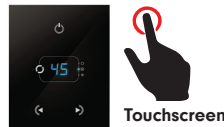
In-Wall Controls



**TVOQ-1-WH**  
 White  
 16 DMX channel, 16 scene,  
 4 zone, glass touch screen



**TVOQ-10-XX-7**  
**XX = BK** (Black), **WH** (White)  
 1024 DMX channel, 500 scene,  
 10 zone, glass touch screen



**TVOQ-2-BK**  
 Black  
 512 DMX channel, 99 scene

**Power Supplies**

**INFINITY - MLV / ELV / 0-10V / PWM / TRIAC**

Dim to 1% with a 0-10V Lutron Diva dimmer (by others)

DESCRIPTION	CAT NO	APPLICATION	PRIMARY VOLTAGE	SECONDARY VOLTAGE	CIRCUIT BREAKERS	MAX LOAD	MIN LOAD	CIRCUIT CAPACITY
Infinity Series Class 2 Transformer	INF-J-30-1-2-5-12	Indoor / Outdoor	100 - 277V AC	12V DC	1	30W	3W	2.5A
	INF-J-60-1-5-12				1	60W	6W	5A
	INF-J-180-3-5-12				3	3x60W	3x6W	3x5A
	INF-J-300-5-5-12				5	5x60W	5x6W	5x5A

**ADNM - NON DIMMING**

DESCRIPTION	CAT NO	APPLICATION	PRIMARY VOLTAGE	SECONDARY VOLTAGE	CIRCUIT BREAKERS	MAX LOAD	CIRCUIT CAPACITY
ADNM Series Class 2 Transformer	ADNM-60-1-5-12-D	Indoor / Outdoor	100-277V AC 50/60 HZ	12V DC	1	60W	5A
	ADNM-80-1-5-12-D				1	60W	5A
	ADNM-150-2-5-12-D				2	2x60W	2x5A
	ADNM-240-3-5-12-D				3	3x60W	3x5A
	ADNM-320-4-5-12-D				4	4x60W	4x5A

**ADNM - 0-10V DIMMING**

DESCRIPTION	CAT NO	APPLICATION	PRIMARY VOLTAGE	SECONDARY VOLTAGE	CIRCUIT BREAKERS	MAX LOAD	CIRCUIT CAPACITY
ADNM Series Class 2 Transformer	ADNM-60-1-5-12-DOT	Indoor / Outdoor	100-277V AC 50/60 HZ	12V DC	1	60W	5A
	ADNM-80-1-5-12-DOT				1	60W	5A
	ADNM-150-2-5-12-DOT				2	2x60W	2x5A
	ADNM-240-3-5-12-DOT				3	3x60W	3x5A
	ADNM-320-4-5-12-DOT				4	4x60W	4x5A

**ADNM - DMX SINGLE ADDRESS**

DESCRIPTION	CAT NO	APPLICATION	PRIMARY VOLTAGE	SECONDARY VOLTAGE	CIRCUIT BREAKERS	MAX LOAD	CIRCUIT CAPACITY
ADNM Series Class 2 Transformer	ADNM-60-1-5-12-DIN	Indoor / Outdoor	100-277V AC 50/60 HZ	12V DC	1	60W	5A
	ADNM-80-1-5-12-DIN				1	60W	5A
	ADNM-150-2-5-12-DIN				2	2x60W	2x5A
	ADNM-240-3-5-12-DIN				3	3x60W	3x5A
	ADNM-320-4-5-12-DIN				4	4x60W	4x5A

**ADNM - DMX MULTI ADDRESS**

DESCRIPTION	CAT NO	APPLICATION	PRIMARY VOLTAGE	SECONDARY VOLTAGE	CIRCUIT BREAKERS	MAX LOAD	CIRCUIT CAPACITY
ADNM Series Class 2 Transformer	ADNM-150-2-5-12-DIN-2	Indoor / Damp	100-277V AC 50/60 Hz	12V DC	2	2x60W	5A
	ADNM-240-3-5-12-din-3				3	3x60W	3x5A